

Elegant - Porte



Description

La porte élégante standard est équipée d'un ouvrant renforcé d'acier de 80 mm et un dormant de 76 mm. Le système a un haut niveau de performance, mais aussi un design élégant et minimaliste.

Spécifications techniques



Géométrie du système

Profondeur 76 mm

Hauteur apparente: 113 mm • Profondeur d'ouvrant: 80 mm

Dimension maximale ouvrant: L 1100 mm / H 2500 mm

Poids maximale ouvrant: 120 kg



Performances thermiques: $U_f \geq 1,1 \text{ W/m}^2\text{K}$



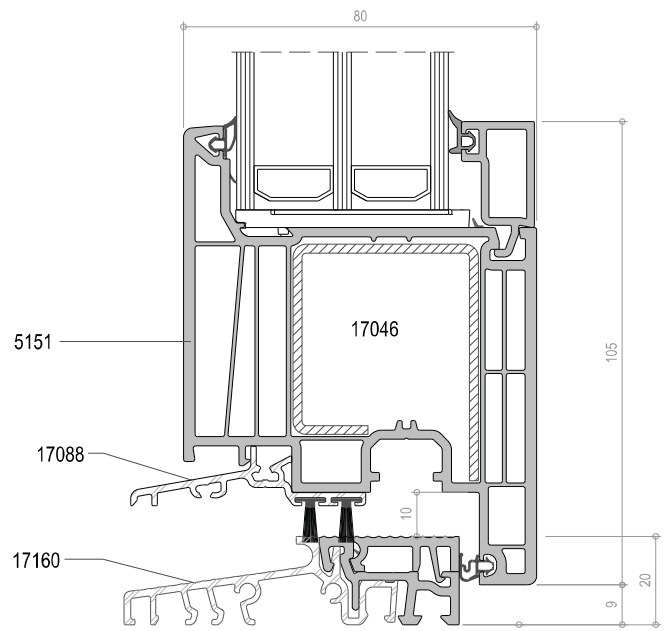
Épaisseur maximale vitrage: 48 mm



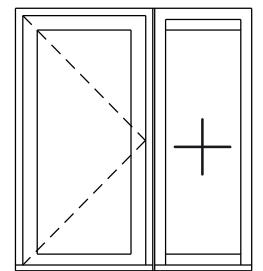
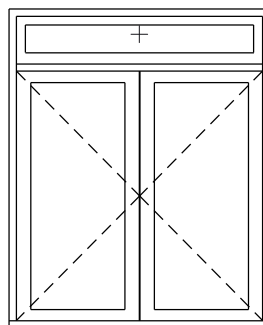
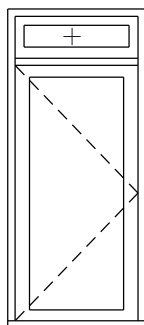
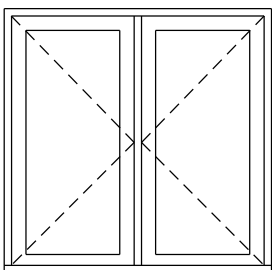
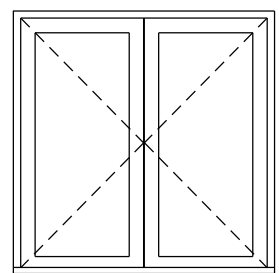
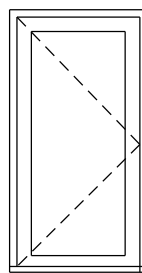
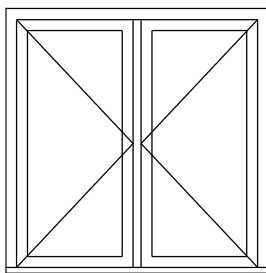
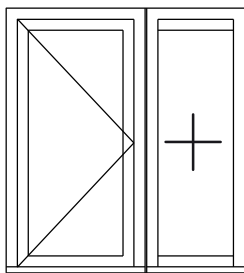
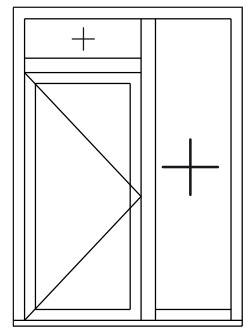
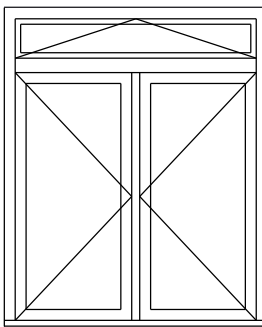
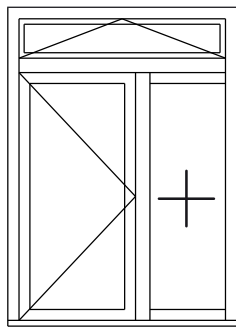
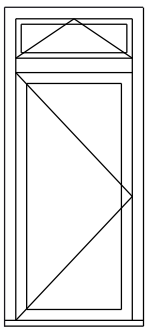
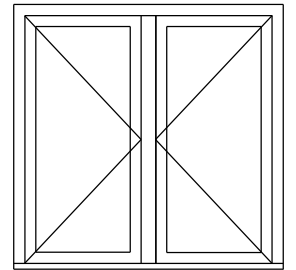
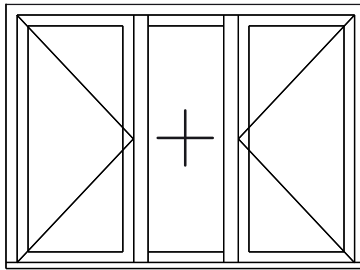
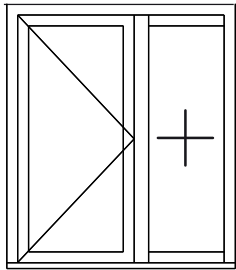
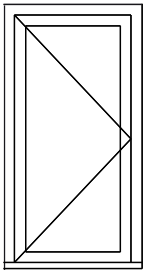
Performance acoustique: R_w jusqu'à 45 dB

*Résistance à l'air: UNE-EN 1026 Classe C5 \ Résistance à l'eau: UNE-EN 1027 Classe 9A \
Résistance au vent: UNE-EN 12211 Classe 4

deceuninck

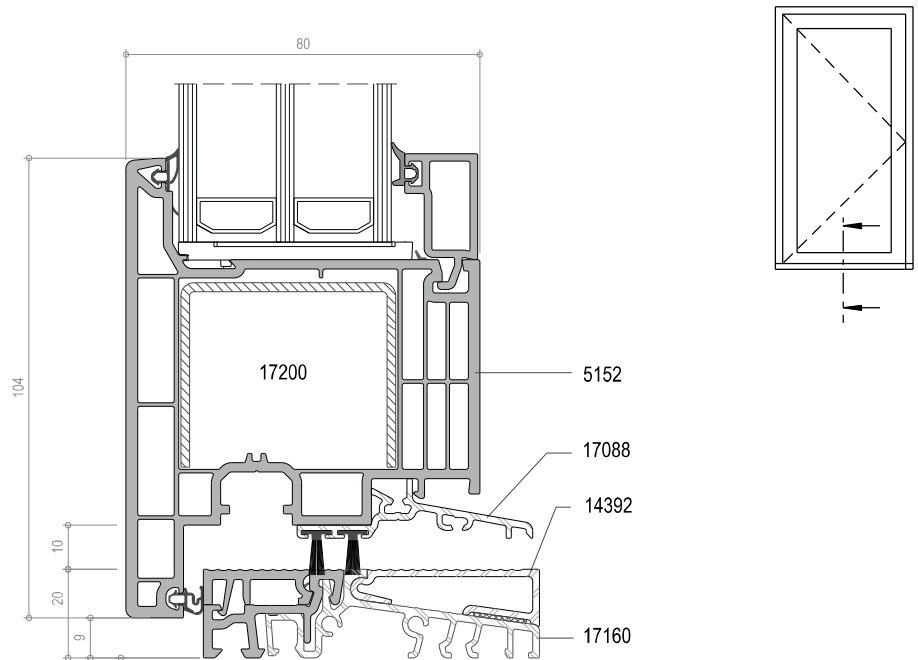


Possibilités d'ouverture



Avantages

- Construction stable du dormant et résistance extrême à la déformation, grâce au renfort en acier d'une épaisseur de 2,0 mm.
- Le système peut être utilisé aussi bien pour les nouvelles constructions que pour les rénovations.



**Fig.1: Dormant + ouvrant
ouverture extérieure**

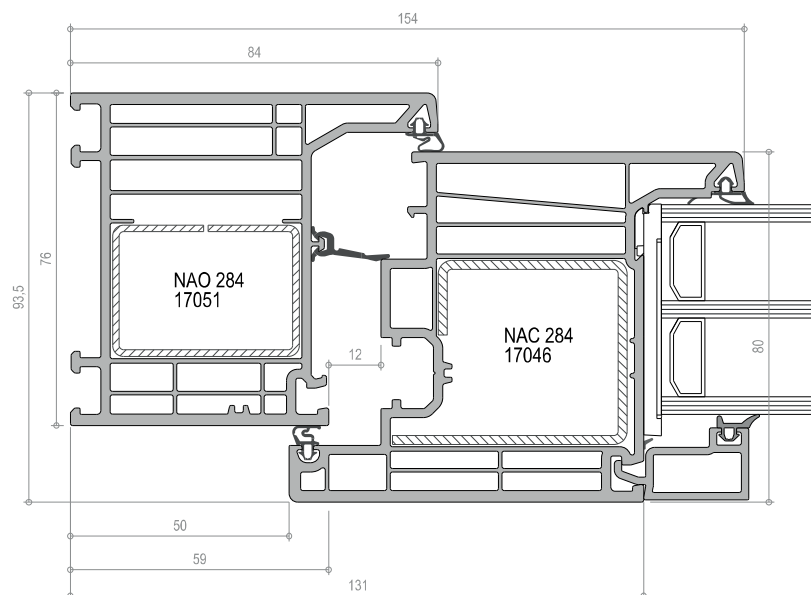
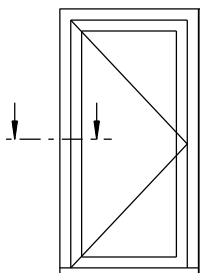
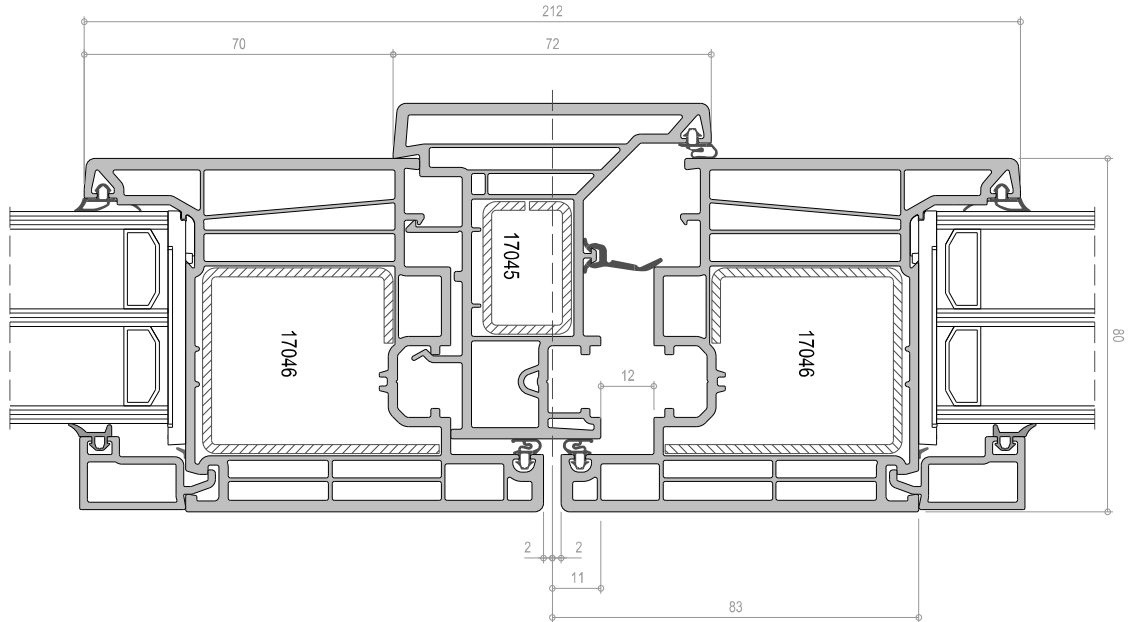
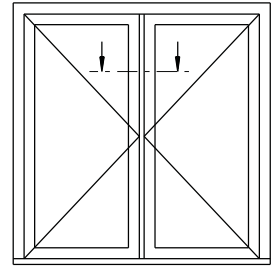
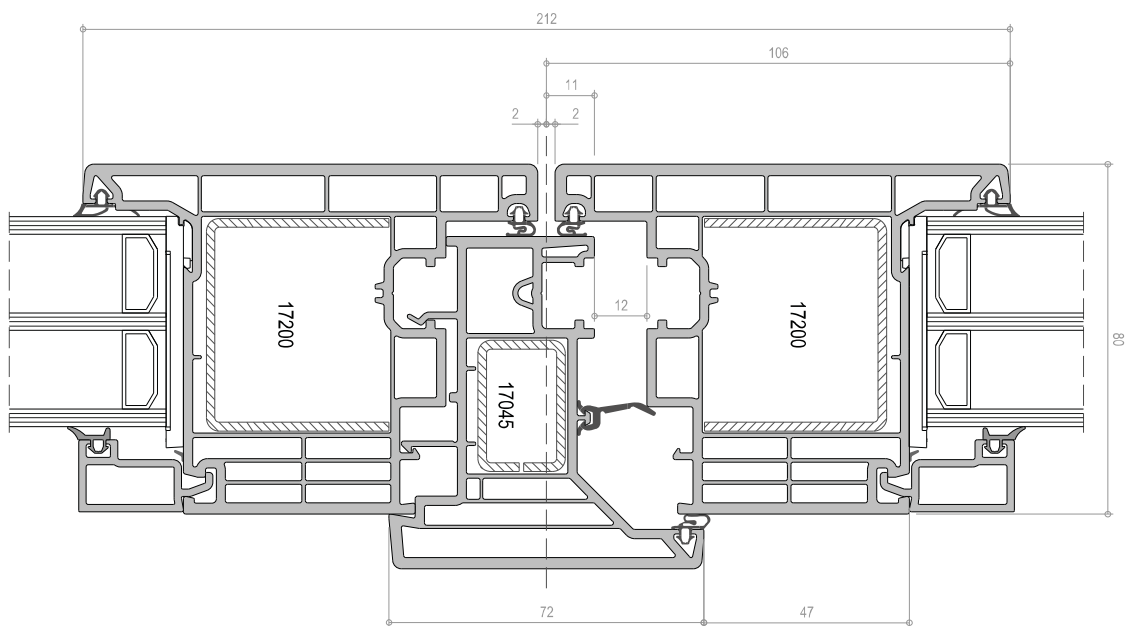
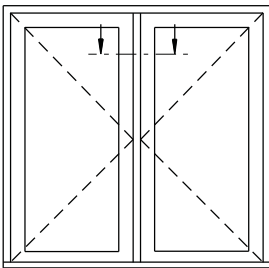


Fig.2: Dormant + ouvrant

Sections



**Fig.3: Battement
ouverture intérieure**



**Fig.4: Battement
ouverture extérieure**